

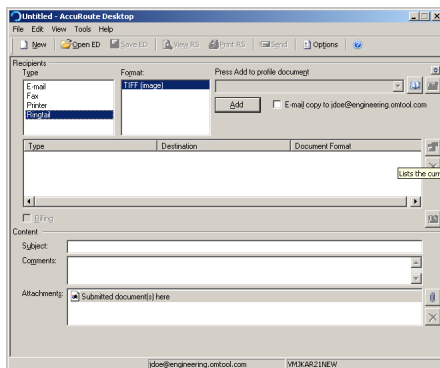
Sending a message to Ringtail Legal using AccuRoute Desktop

For detailed information on sending messages using AccuRoute Desktop, consult the user guide located at:

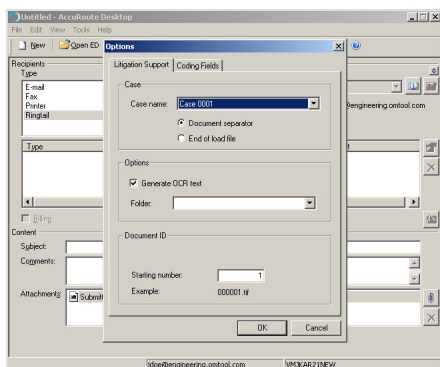
<http://www.omtool.com/documentation/Accuroute/v22/AccurouteDesktop/AccuRouteDesktopV22UserGuide.pdf>

To send a message to Ringtail Legal using AccuRoute Desktop:

- 1 Start AccuRoute Desktop. Click **START**, go to the Omtool programs group, and select **ACCURROUTE DESKTOP**. Log in if prompted. The application appears on your desktop.
- 4 In the **CASE** section, select an available case from the drop-down list and select either **DOCUMENT SEPARATOR** or **END OF LOAD FILE**.



- 2 Select the destination type **RINGTAIL** in the **RECIPIENTS TYPE** list. The only available file format is TIFF (image)
- 3 Click **ADD**. The Options window appears and displays the Litigation Support tab.



DOCUMENT SEPARATOR - This option generates a Routing Sheet that indicates the presence of a document. A document separator Routing Sheet must be placed in front of any document destined for Ringtail Legal.

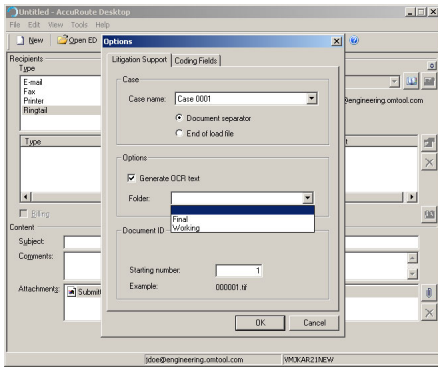
END OF LOAD FILE - This option generates a Routing Sheet indicating that this message is the end of the case file upload. The end of load file Routing Sheet tells the Omtool server to finalize the load files and copy them from the working folder to the final folder.

The **Retain Routing Sheet in delivered document** option is automatically selected for an end of load file Routing Sheet.

» When you select **END OF LOAD FILE**, you can not click **SEND** to send the message. You must send end of load file Routing Sheets through the standard network scanning process. If you have questions regarding the standard network scanning process, contact your network administrator.

- 5 In the **OPTIONS** section, select **GENERATE OCR TEXT** (optional). Selecting this option will create OCR text files in addition to the single page TIF files. OCR text files are searchable when imported into Ringtail Legal. If this option is not selected, only the single page TIF files are created, and the document is not searchable within Ringtail Legal.

- 6** In the **OPTIONS** section, select the destination folder from the drop-down list.



- 9** Enter information for any custom user-defined fields. If a field is required, you must enter information for that field. There are five different types of data fields, see your network administrator if you have any questions.

String - If a custom user-defined field is defined as a string value field, you can enter alpha or numeric text.

Custom Fields	
Title	Document Title
Description	Document Description
Document Type	Document Type
Type of Litigation	Personal injury
Department Code	
Active Case?	<input type="checkbox"/>
Trial Date	12/12/2006
Attorney Name	

- 7** In the **DOCUMENT ID** section, enter a **STARTING NUMBER** or accept the default of 1.

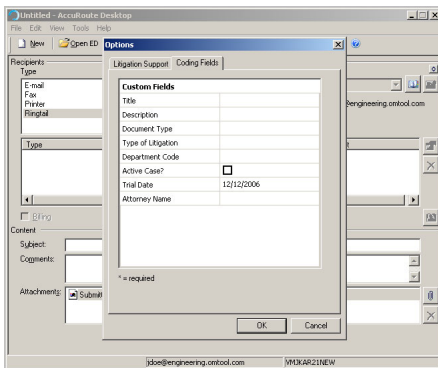
In most cases, documents will be numbered starting with the specified number. If there is a document with a higher number already referenced in the load file, however, the starting number will begin at the next highest number.

The starting number field is added to the file name during the Compose process. For example, if Width is set to six, the resulting file name will be 000001.tif. The starting number (in this example 000001) indicates the first individual file number of the single page files.

Number - If a custom user-defined field is defined as a number field, you can only enter whole numbers.

Custom Fields	
Title	Document Title
Description	Document Description
Document Type	Document Type
Type of Litigation	Personal injury
Department Code	250
Active Case?	<input type="checkbox"/>
Trial Date	12/12/2006
Attorney Name	

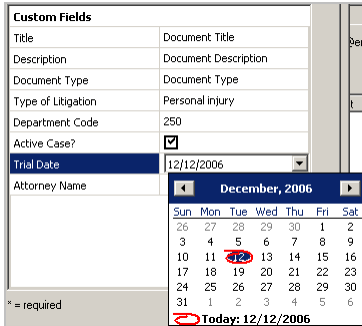
- 8** Click the **CODING FIELDS** tab (this is defined by your network administrator). All fields may not be available.



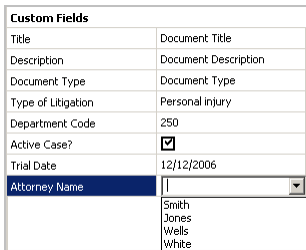
Boolean - If a custom user-defined field is defined as a boolean field, select the check box if the answer is true, and clear the check box if the answer is false.

Custom Fields	
Title	Document Title
Description	Document Description
Document Type	Document Type
Type of Litigation	Personal injury
Department Code	250
Active Case?	<input checked="" type="checkbox"/>
Trial Date	12/12/2006
Attorney Name	

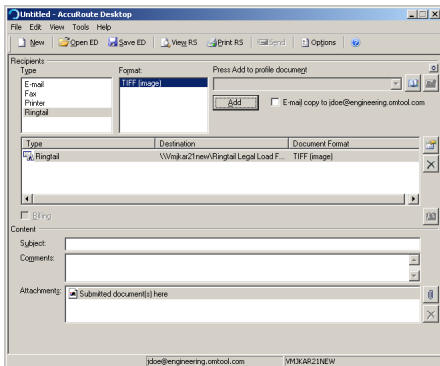
Date - If a custom user-defined field is defined as a date field, the field defaults to today's date. To change the date, click on the date, click the down arrow, and select the correct date from the calendar that appears



Pick - If a custom user-defined field is defined as a pick-list field, select a value from the drop-down list. Depending on your system's configuration, you may be able to enter your own values.



10 Click **OK**. A Ringtail destination appears in the message.

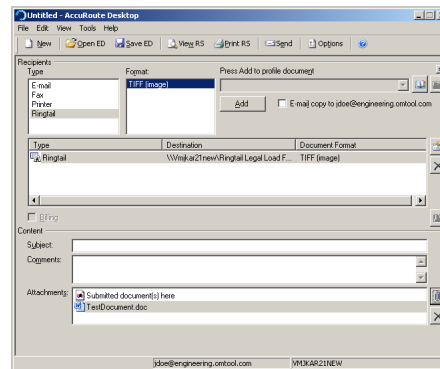


11 Add content to your message.

- a** Locate the **CONTENT** section at the bottom and type a subject and comments.
- b** Add any attachments you want to send with your message. Click the paperclip icon and do one of the following:

FILE - Select this option to attach a file saved from your computer or network share. Go to the file, select it, and click **OPEN**. The file appears in the attachments list.

WEB DOCUMENT - Select this option to attach a web page from the Internet. Type the address of the web document, choose a file name for the attachment, select a file format for this attachment (such as PDF or HTML), and click **OK**.



12 Do any of the following:

Send the message immediately - Click **SEND** on the toolbar. A message box indicates that your message has been sent to the server. (Your message must have at least one attachment.)

Save the message as an Embedded Directive - Click **SAVE ED** on the toolbar, type a title for the Embedded Directive, and click **SAVE**.

Print a Routing Sheet that can be scanned with hard copy documents - Save the message as an Embedded Directive. Then click **PRINT RS** on the toolbar. AccuRoute Desktop creates a Routing Sheet containing the Embedded Directive and displays it as a PDF file on your desktop. Print the Routing Sheet and

include it as the first or last page of the hard copy document. Take the document to a network scanner and scan it using the instructions provided by your network administrator. (Your message can include both electronic and hard copy documents.)

- 13** Import the load files to Ringtail Legal. If you need assistance importing the load files, contact your network administrator.