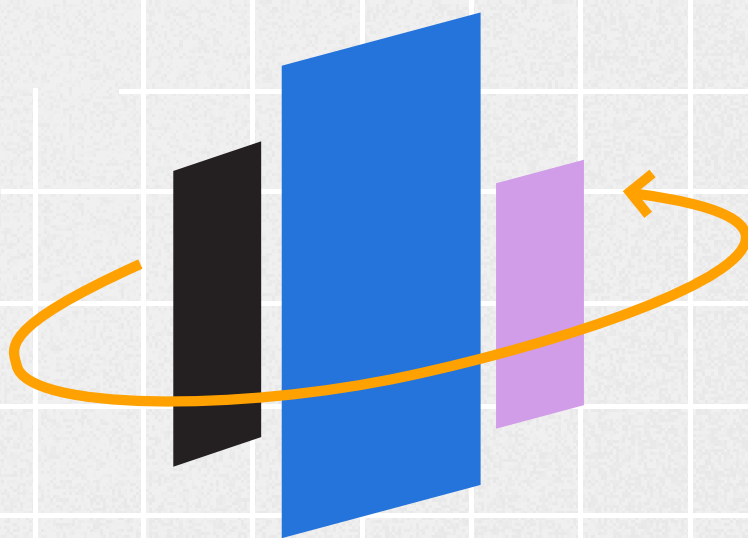


AccuRoute 6.6

Server Requirements



AccuRoute 6.6 Server/VM Requirements

Server/VM Requirements and Recommendations

Upland AccuRoute Server requirements may vary significantly based on your system configuration, the features you install, and volume of document processing (e.g., OCR). Recommendations may also differ based on your organization’s specific needs and volumes. Please see page two for the recommendation for your specific configuration.

Minimum Recommended Configuration

Component	Recommended
Processor	16 GB + Quad-Core Processor, 2.6 GHz + Multi-Processors or Multi-Core Processors
Memory (RAM)	16 GB +
Available Hard-Disk Space	200 GB + (100 GB minimum) Available hard-disk space after installation of operating system and required applications
Operating System	Microsoft Windows 2012 R2, 2016, 2019 (64-bit), 2022
Required Applications	Internet Information Server (IIS) with SMTP and Worldwide Web services enabled. The IIS configuration requires ALL of the components except FTP. An internet browser must also be installed.
SQL	SQL Express will be installed during the AccuRoute installation unless SQL Server is already installed on the server, or a “highly available” SQL instance is available to connect to. SQL 2016, 2017 and 2019 are currently supported.
.Net	.NET Core 6.x is required for AccuRoute Web Apps, .NET Framework 4.8 is required for the application server, integrations with Xerox EIP will require .NET 3.5 SP1.

Note

Recommended configuration subject to change based on customer environment. If installed on a virtual machine, the above resources must be dedicated.



Requirements

- The service account that the AccuRoute server will run with must be a Local Admin and Domain User. It is not sufficient for the account to be just a Local User on the server.
- The AccuRoute server must be a member of the Microsoft Windows Domain. It is not sufficient to be a stand-alone server in a Workgroup.
- AccuRoute should be installed on a dedicated server/VM.
- For hardware-based (non-Fax-Over-IP) faxing capabilities, the system must have a full-length or half-length PCI-x or PCI-e card slot available (depending on your purchased board) to accommodate a supported Dialogic Brooktrout Fax Board in order to connect to the telephone network. Please note, the PCI slot type and Dialogic Brooktrout Fax Board type must match (e.g., if the slot type is PCI-e, the board must be PCI-e). If you have questions about what you purchased, please contact your Regional Sales Manager.
- A PDF-reading application should be installed on the AccuRoute Server in order to view provided system documentation.
- ObjectArchive should be installed on a dedicated server in addition to the AccuRoute server if ObjectArchive is required for configuration.

Additional Recommendations

- The server size is based on your document processing volume. Each conversion thread requires its own CPU/core and memory (use recommended 4GB RAM per thread).
- The primary server requires one CPU/core to be reserved for the operating system, system manager, and connectors. A remote composer can utilize all of the CPU/cores.



Ports

The following ports are used by AccuRoute and must be open.

Protocols and ports used by AccuRoute	Direction	Protocol	Ports
Communication between AccuRoute server and Active Directory	out	LDAP TCP	389
Communication from AccuRoute server to email server	out	SMTP TCP	typically: 25
Send print jobs from AccuRoute server to network printers	out	LPR TCP	9100
Communication between AccuRoute web server (IIS) and network printers	bidirectional	HTTP TCP	80
Communication between AccuRoute web server (IIS) and network printers	bidirectional	HTTPS TCP	443
Communication between AccuRoute web server (IIS) and network printers	out	SNMP v2 UDP	161,162
Communication between AccuRoute web server (IIS) and network printers	bidirectional	OXF	7627
Communication between AccuRoute admin client and AccuRoute Server	in	DCOM TCP+UDP	135, 49152-65535
Communication between AccuRoute servers	bidirectional	DCOM TCP+UDP	135, 49152-65535
Communication between IIS and AccuRoute servers	bidirectional	DCOM TCP+UDP	135, 49152-65535
Communication between AccuRoute server and SQL	bidirectional	TCP+UDP	1433

